

Jochen Warth

steel sculptures

„I am physically dealing with space. Effort, detours and the resulting slowdown play an important role. In this way , I can reflect and develop space, make it familiar to me, appropriate it – until it belongs to me.“

Jochen Warth



















































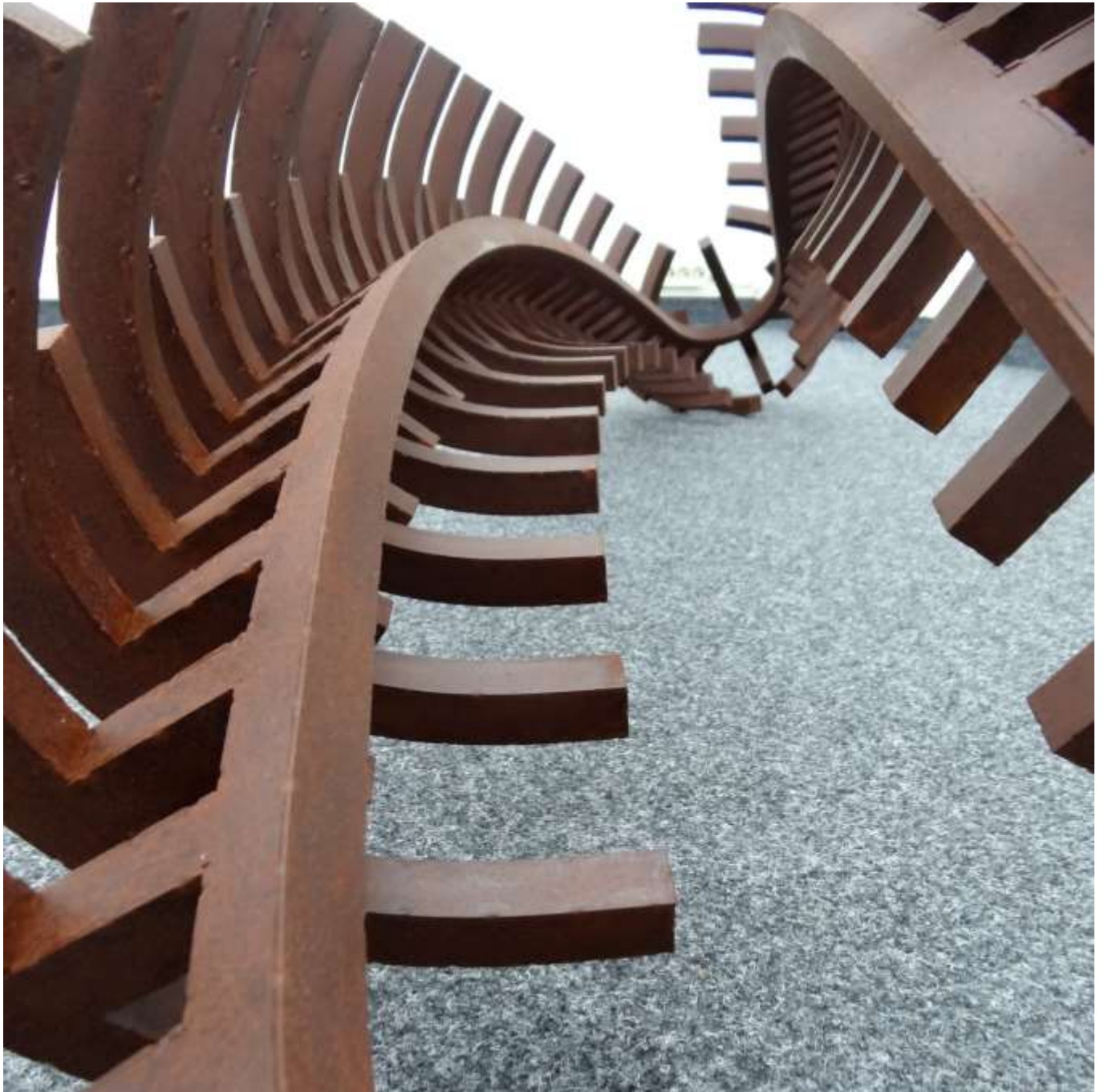












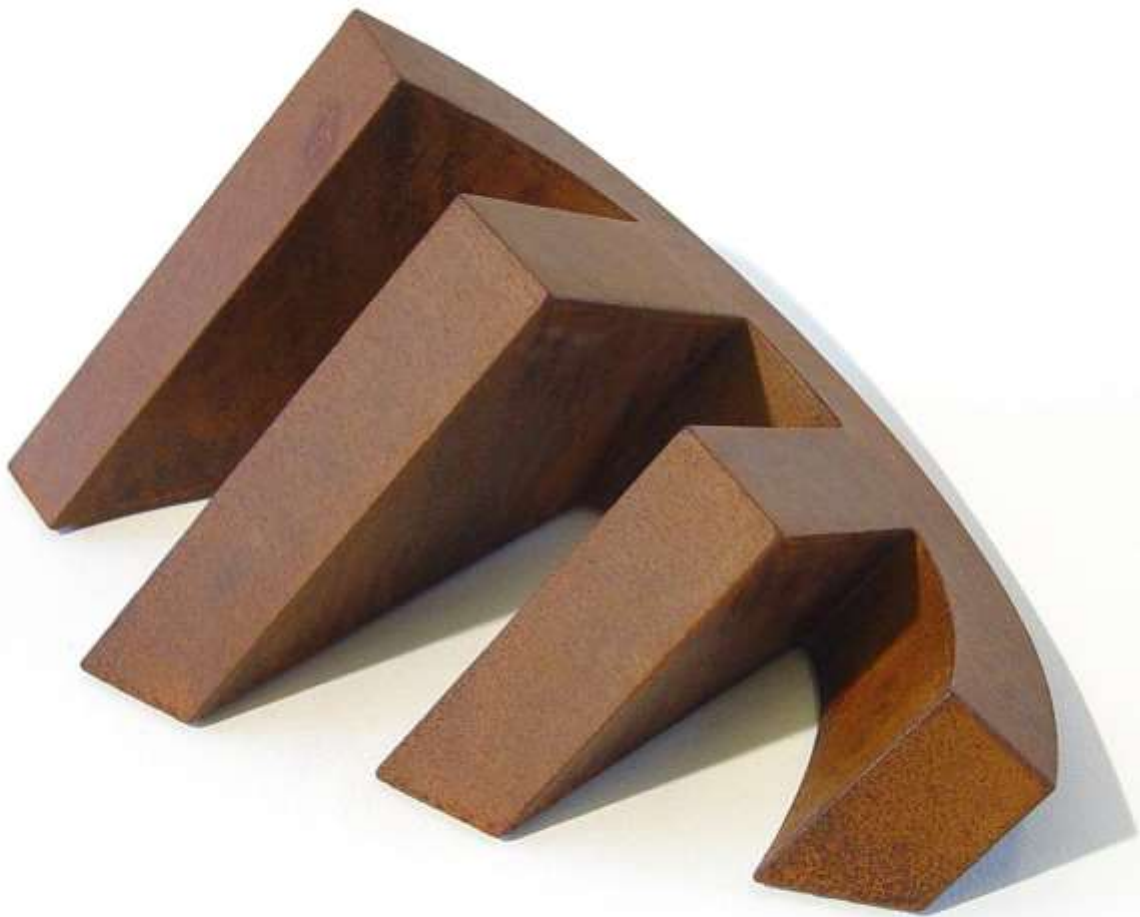


















My preferred material for my sculptures is steel. Clear, reduced, abstract geometric forms, are my artistic subject.

The sculptures mostly remain 'untitled' because I want to give the viewer room for their own associations and interpretations.

My sculptures circumscribe spaces, indicate directions and entice the viewer to follow these forms and viewpoints.

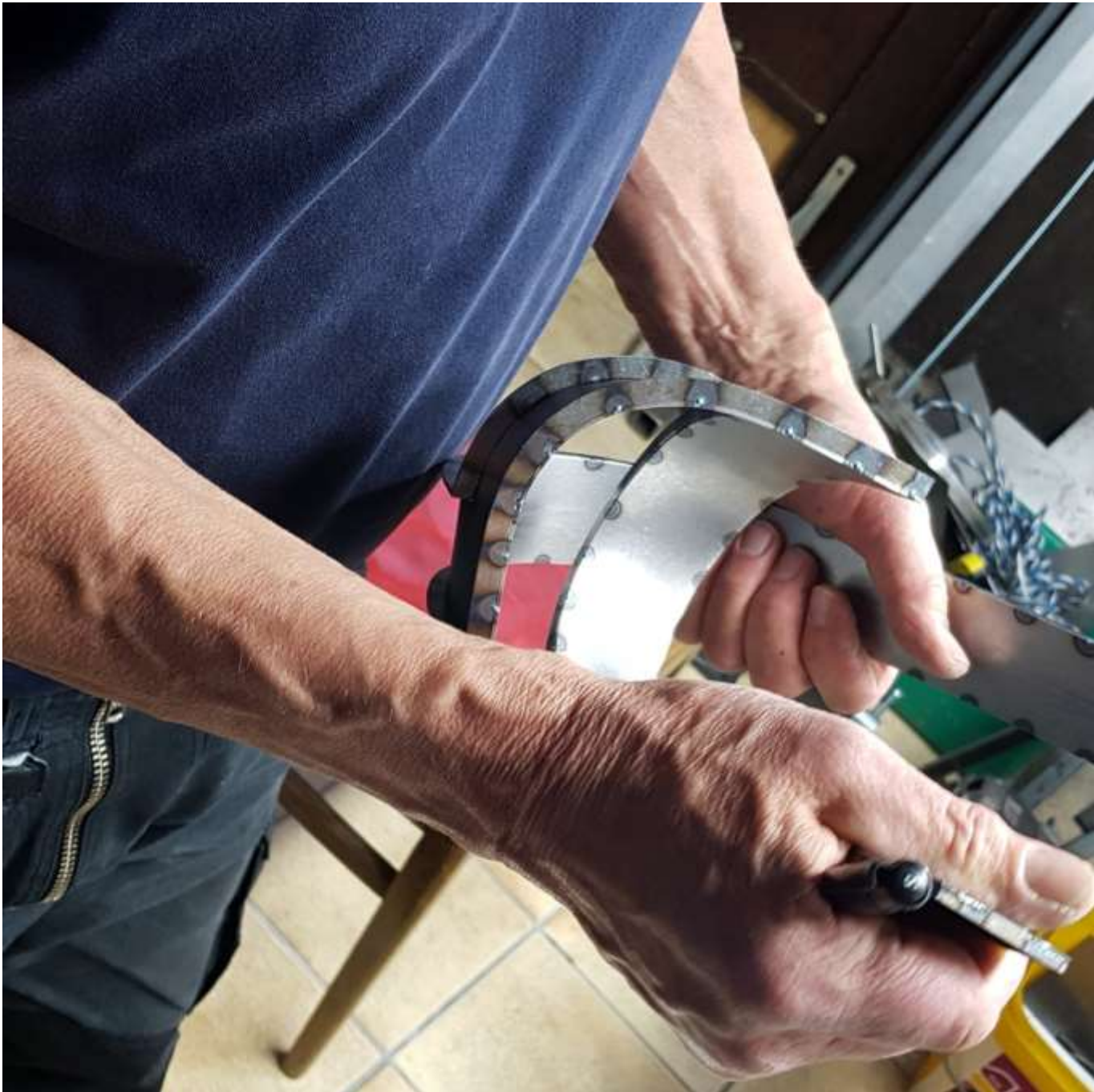
All work starts with ordinary steel plates, 1-3 mm thick, which I cut, saw, bend and weld myself. The laborious 'wrestling' with the material and the form is an elementary part of my creative process for me. The desired technical perfection is an integral part of my artistic expression.





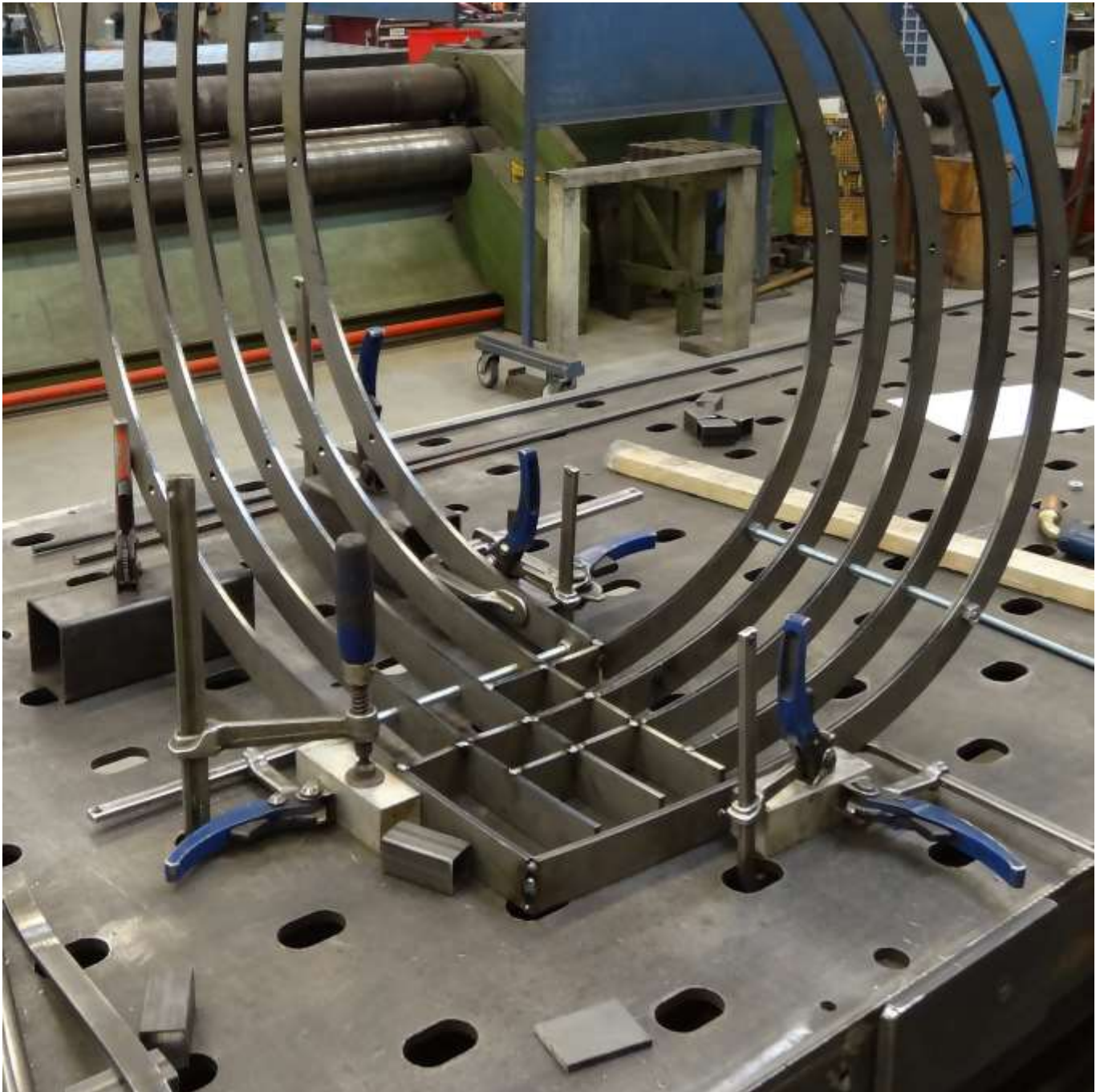
















Jochen Warth



Born in 1952 in Öhringen (Germany)
Lives and works in Nehren (Germany).

Jochen Warth is an experienced steel sculptor. Clear, reduced, abstract forms, are his artistic subject. On his artistic path since the 1980s, he had worked with other materials as well, such as wood, cloth, feathers, lead, granite and concrete, but since the 2000s his focus is on pure steel sculptures.

Member of the Royal Society of Sculptors (RSS)

Member of Sculpture Network

Contact information

jochen.warth@gmx.de | www.jochenwarth.de | [instagram.com/jochenwarth](https://www.instagram.com/jochenwarth)

Studio and postal address: Bronnäckerstraße 15, 72147 Nehren, Germany

Version:
12/2023

Pictures:
Jochen Warth, Tilman Wilke
S. 27: Claudia Rothe

Layout and realization:
Tilman Wilke

All rights:
Jochen Warth